



Darkripper Outdoor Equipment Limited

Break the darkness





Table of Contents / Factory Overview

CONTENTS

LED Flashlights

- 01 KT4 & KT5
- 02 DF5 & ZF8
- 03 EC4 & MC8
- 04 DF7 & DF12
- 05 TF22 & TF13
- 06 TF15 & TF20
- 07 ZF12 & ZF16
- 08 TF7 & WF10

Camping Lanterns

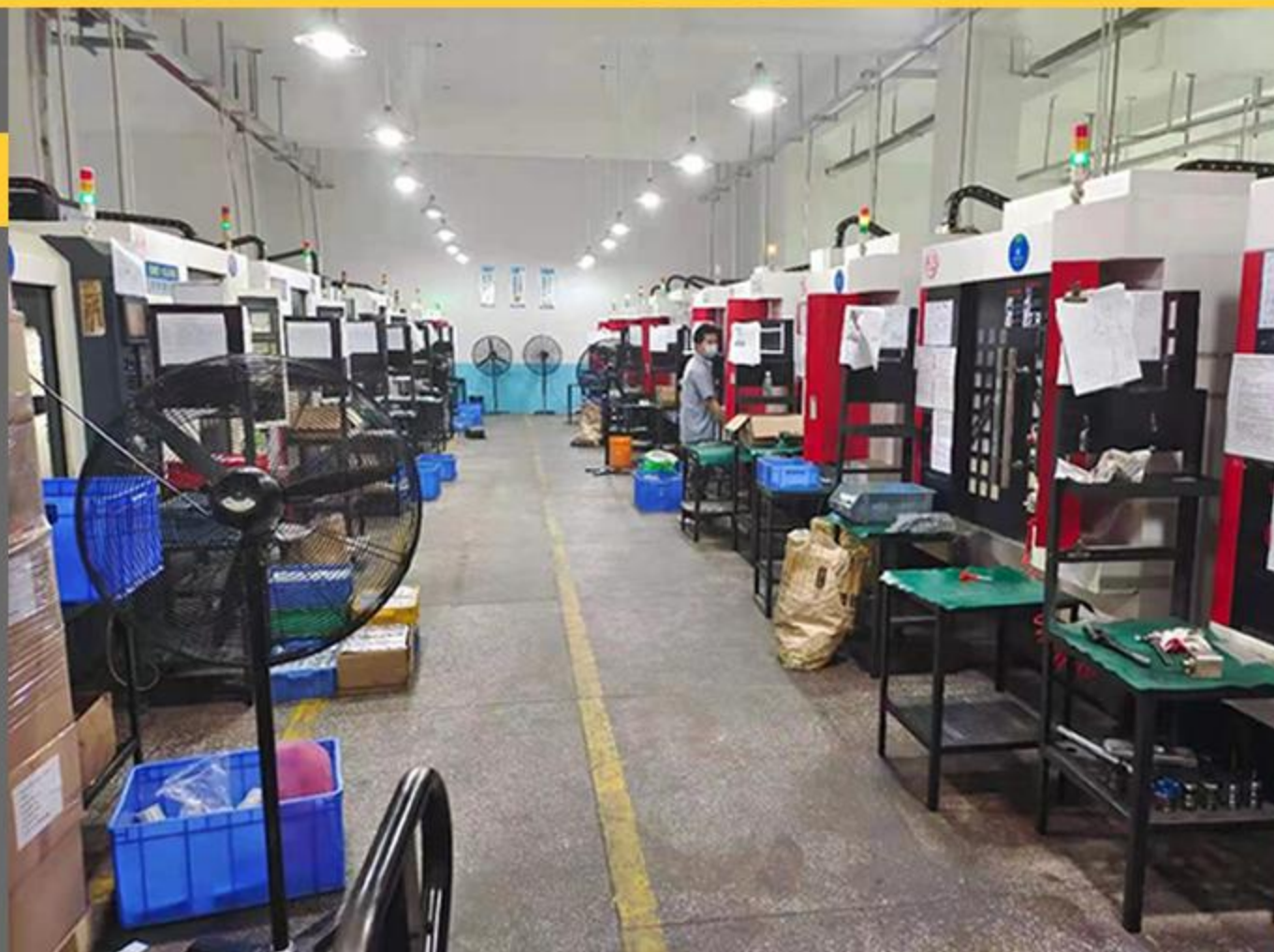
- 09 CL2 & CL8
- 10 CL1 & CL3
- 11 CL10 & CL12

LED Headlamps

- 12 HL1 & HL5
- 13 HL3 & HL4
- 14 HL3 & HL4

Bicycle Lights

- 15 BL6 & BL4



As a leader in outdoor sport illuminations, our mission at Darkripper is to be a provider of top quality products at competitive prices and to offer the highest level of service and expertise to our customers. We believe that by helping to change lighting we can make a meaningful contribution towards the common goal of a more sustainable future for our planet which will in turn preserve the resources necessary for the success of future generations. Every product in our extensive inventory adheres to our three primary core values of Superior Quality, Superior Performance, and Superior Efficiency. Our depth of expertise in outdoor sport illuminations ensure that the needs of our customers are met fully from hands on design and support to superior customer service on every project.

Darkripper offers illumination products for both tactical and camping applications serving end users and wholesale distribution customers. Each of our products has undergone rigorous development and testing before being added to our product line in order to maximize performance, provide market leading reliability, and keep costs to the end user as low as possible.

Darkripper products are built with environmental sustainability in mind. Our products contain no MERCURY and are made from 100% recyclable materials. All of our electrical products are guaranteed with a manufacturer's warranty. As we continue to grow our product offering we take pride in staying up to date on the latest trends in the outdoor sport lighting industry and providing the value of that knowledge to our customers.

KT4



LED:	Cree XP-G2 and SMD red/blue/UV/white
Modes:	Spot beam: turbo/high/med/low/eco; Flood beam: white/white flashing/UV/red /red flashing/red & blue flashing
Max Output:	400lm
Beam Distance:	81m
Battery:	Built-in 300mah Li-polymer
Running Time:	30 minutes at high
Rechargeable:	Yes, USB-C
Charging Input	5V/0.5A
Material:	Stainless steel and PC
Color Option:	Transparent, green, blue, luminescent
Waterproof:	IP65
Dimension:	61(L) x 16mm(head OD)
Net Weight:	18g

Operations

- * Spot beam: quick double click the button at any mode;
- * Mode switching: single click to switch high - med - low - eco;
- * Turbo on: click the button while off;
- * Flood beam: quick triple click the button at any mode, the light will turn on white flood beam;
- * Mode switching: single click to switch white - white flashing - UV - red - red flashing - red & blue flashing;
- * Turn off the light: hold the button over 1 second at any mode;
- * Charging: red on while charging, green on after full charged

KT5

LED:	Cree XP-G2(1pc white and 1pc red or UV)
Modes:	High/med/low/eco/red/red flashing
Max output:	500lm
Beam Intensity:	2078cd
Beam Distance:	90m
Battery:	Built-in 300mah Li-polymer
Running Time:	22 minutes at high
Rechargeable:	Yes, USB-C
Charging Input	5V/0.5A
Material:	Aluminum
Surface Finish:	Anodized
Color Option:	Black, gray, blue, pink
Waterproof:	IP65
Dimension:	(L)52 x (W)25 x (H)12mm
Net Weight:	23g

Operations

- * On/off: hold the switch over 1 second;
- * Mode switching: single click to switch high - med - low - eco;
- * Red on: quick double click at any mode, again to start red flashing;
single click at any red mode to return to last white mode
- * Charging: red on while charging, green on after full charged



DF5

LED: Luminus SST-20
 Modes: High/low/strobe
 Max output: 500lm(14500 Li-ion battery)
 Beam Intensity: 4635cd
 Beam Distance: 122m
 Battery: 1pc 14500 or AA battery
 Running Time: 1 hour at high(750mah 14500 Li-ion)
 Rechargeable: None
 Material: Aluminum
 Surface finish: Anodized
 Color Option: Black
 Waterproof: IP68
 Dimension: (L)95 x 20mm(Head OD)
 Net weight: 36g(without battery)

Operations

- * On/off: complete press the tail switch
- * Momentary on: half click the switch
- * Mode switching: quick click within 1 second to switch high - low - strobe modes
- * Mode memory: turn off the light over 1 second, then turn on again to return to the last mode



ZF8

LED: 10W white laser
 Modes: High/med/low/strobe
 Max Output: 800lm(14500 Li-ion battery)
 Beam Intensity: 11032cd
 Beam Distance: 428m
 Battery: 1pc 14500 or AA battery
 Running Time: 1.3 hours at high(750mah 14500 Li-ion)
 Rechargeable: None
 Material: Aluminum
 Surface Finish: Hard anodized
 Color Option: Black
 Waterproof: IP67
 Dimension: (L)95 x 22mm(head OD)
 Net Weight: 55g(without battery)

Operations

- * On/off: complete press the tail switch;
- * Mode switching: quick complete click to switch high - med - low modes, or light click to switch high - med - low after to turn on;
- * Strobe on: quick double click the switch within 0.5 second at any mode while on; or quick triple complete click the switch within 1 second
- * Mode memory: turn off the light over 1 second, then turn on again to return to the last mode

EC4



LED:	Cree XP-G2
Modes:	High/med/low/strobe/SOS
Max Output:	400lm(16340 Li-ion battery)
Beam Intensity:	3923cd
Beam Distance:	103m
Battery:	1pc (R)CR123 or 16340 Li-ion
Running Time:	1 hour at high(650mah 16340)
Rechargeable:	Yes, Micro USB
Charging Input:	5V/1A
Material:	Aluminum
Surface Finish:	Anodized
Color Option:	Black
Waterproof:	IP65
Dimension:	(L)66 x 23mm(head OD)
Net Weight:	33g(without battery)

Operations

- * On/off: hold the button over 1 second
- * Mode switching: single click after turn on to switch (turbo)high - med - low
- * Strobe on: quick double click at any time will turn on strobe, again switch to SOS; single click at any mode to return to last mode
- * Mode memory: turn off the light over 1 second, then turn on again to return to the last mode
- * Charging: red on while charging, green on after full charged

MC8

LED:	Cree XP-L2
Modes:	High - Low/strobe/SOS
Max output:	800lm(16340 Li-ion battery)
Beam Intensity:	3844cd
Beam Distance:	96m
Battery:	1pc (R)CR123 or 16340 Li-ion
Running Time:	0.7 hour at high(650mah 16340)
Rechargeable:	Yes, type-C
Charging Input:	5V/1A
Material:	Aluminum
Surface finish:	Anodized
Color Option:	Black
Waterproof:	IP65
Dimension:	(L)65 x 21mm(head OD)
Net Weight:	32g(without battery)

Operations

- * On/off: single click the switch
- * Brightness dimming: hold the switch the brightness will changes from 100% to 5%(or 5% to 100%), release to choose the brightness
- * Strobe on: quick double click at any mode, again switch to SOS; single click at any mode to return to last mode
- * Lock/unlock: quick triple click the switch within 1 second, and the light flashes 3 times
- * Charging: red on while charging, green on after full charged



DF7

LED:	Luminus SST-20
Modes:	high/med/low/strobe
Max output:	700lm
Beam Intensity:	8744cd
Beam Distance:	173m
Battery:	1pc 18650 Li-ion battery
Running Time:	1.7 hours at high(2600mah 18650)
Rechargeable:	None
Material:	Aluminum
Surface finish:	Anodized
Color Option:	Black, gray, red, blue, green
Waterproof:	IP68
Dimension:	(L)135 x 26mm(Head OD)
Net weight:	82g(without battery)

Operations

- * On/off: complete press the tail switch
- * Momentary on: half click the switch
- * Mode switching: quick click within 1 second to switch high - med - low - strobe modes
- * Mode memory: turn off the light over 1 second, then turn on again to return to the last mode
- * Low power protection: the light flashes 3 times and can turn on low mode only



DF12

LED:	Luminus SST-20
Modes:	High/med/low/strobe/SOS
Max Output:	980lm
Beam Distance:	17238cd
Beam Distance:	262m
Battery:	1 pc 18650 Li-ion battery
Running Time:	1.5 hours at high(2600mah 18650)
Rechargeable:	None
Material:	Aluminum
Surface finish:	Anodized
Color Option:	Black, gray, silver, blue, red, olive
Waterproof:	IP68
Dimension:	(L)142 x 45mm(head OD)
Net Weight:	140g(without battery)

Operations

- * On/off: complete press the tail switch
- * Momentary on: half click the switch
- * Mode switching: quick click within 1 second to switch high - med - low - strobe - SOS modes
- * Mode memory: turn off the light over 1 second, then turn on again to return to the last mode
- * Low power protection: the light flashes 3 times and can turn on low mode only



TF22



LED:	Luminus SST-40
Modes:	Turbo/high/med/low/eco/strobe
Max Output:	2200lm
Beam Intensity:	44657cd
Beam Distance:	406m
Battery:	1pc 21700 Li-ion battery
Running Time:	1.5 hours at high(4500mah 21700)
Rechargeable:	Yes, type-C
Charging Input:	5V/2A
Material:	Aluminum
Surface Finish:	Anodized
Color Option:	Black, gray, white
Waterproof:	IP65
Dimension:	(L)140 x 37mm(head OD)
Net Weight:	140g(without battery)

Operations

- * On/off: click to turn on, hold the button for 2 seconds to turn off
- * Mode switching: single click to switch high - med - low - eco
- * Turbo on: quick double click at any time to turn on turbo mode, single click to return to last mode
- * Strobe on: quick triple click at any time to turn on strobe mode, single click to return to last mode
- * Lock/unlock: quick click the switch for 5 times
- * Charging: red on while charging, green on after full charged

TF13

LED:	Cree XP-L2
Modes:	High/med/low/strobe/SOS
Max output:	1300lm
Beam Intensity:	36833cd
Beam Distance:	332m
Battery:	1pc 21700 Li-ion battery
Running Time:	2 hours at high(4500mah 21700)
Rechargeable:	Yes, type-C
Charging Input:	5V/2A
Material:	Aluminum
Surface finish:	Anodized
Color Option:	Black, gray
Waterproof:	IP65
Dimension:	(L)108 x 42mm(head OD)
Net Weight:	96g

Operations

- * On/off: single click to turn on, hold the switch at any mode to turn off the light
- * Mode switching: single click to switch high - med - low
- * Strobe on: quick double click at any time will turn on strobe, then single click to switch to SOS mode
- * Lock/unlock: hold the switch for 6-8 seconds
- * Mode memory: turn off the light over 1 second, then turn on again to return to the last mode
- * Charging: red on while charging, green on after full charged



TF15

LED:	Luminus SST-40
Modes:	Turbo/high/med/low/eco/strobe
Max output:	1500lm
Beam Intensity:	41667cd
Beam Distance:	317m
Battery:	1pc 21700 Li-ion(4500mah battery)
Running Time:	1.7 hours at turbo
Rechargeable:	Yes, type-C
Charging Input:	5V/2A
Material:	Aluminum
Surface finish:	Anodized
Color Option:	Black
Waterproof:	IP65
Dimension:	(L)128 x 30mm(Head OD)
Net weight:	76g(without battery)

Operations

- * On/off: hold the button over 0.5 second
- * Mode switching: quick click to switch turbo - high - med - low - eco
- * Strobe on: hold the button over 3 seconds at any mode(turn on turbo first then switch to strobe while off)
- * Lock/unlock: quick double click the button while off, the light will flashing twice
- * Charging: red on while charging, green on after full charged
- * Power indicator: 85% - 100 green on, 50% - 85% green flashing, 25% - 50% red on, lower than 25% red flashing



TF20

LED:	Luminus SST-40
Modes:	Turbo/high/med/low/strobe
Max Output:	1900lm
Beam Intensity:	43875cd
Beam Distance:	336m
Battery:	1 x 21700 Li-ion
Running Time:	1.5 hours at turbo(4500mah battery)
Rechargeable:	Yes, type-C
Charging Input:	5V/2A
Material:	Aluminum
Surface finish:	Anodized
Color Option:	Black
Waterproof:	IP65
Dimension:	(L)131 x 31mm(head OD)
Net Weight:	71g(without battery)

Operations

- * On/off & mode switching: twist the ring to the marked position to switch off - low - med - high - turbo - strobe
- * Charging: green flashing while charging, constant on after full charged
- * Discharging: type-C input/output can be used as a power bank
- * Power indicator: 25% each level



ZF12



LED:	15W white laser
Modes:	high/med/low/strobe/SOS
Max Output:	1200lm
Beam Intensity:	6462cd
Beam Distance:	386m
Battery:	1pc 21700(compatible with 18650)
Running Time:	2.2 hours at high
Rechargeable:	Yes, type-C
Charging Input:	5V/1A
Material:	Aluminum
Surface Finish:	Anodized
Color Option:	Black
Waterproof:	IP65
Dimension:	(L)153 x 39mm(head OD)
Net Weight:	160g(without battery)

Operations

- * On/off: single click to turn on, hold button over 2 seconds to turn off at any mode
- * 3 modes/5 modes option: hold the button for 2 seconds while off
- * Mode switching: single click to switch high - med- low - strobe - SOS(3 modes is high - med -low only)
- * Charging: red on while charging, green on after full charged
- * Power indicator: green on while power over 30%, red on while power lower than 30%

ZF16

LED:	20W white laser
Modes:	high/med/low/strobe/SOS
Max output:	1600lm
Beam Intensity:	7329cd
Beam Distance:	427m
Battery:	1pc 26650 Li-ion battery
Running Time:	2.5 hours at high
Rechargeable:	Yes, type-C
Charging Input:	5V/1A
Material:	Aluminum
Surface finish:	Anodized
Color Option:	Black
Waterproof:	IP65
Dimension:	(L)161 x 50mm(head OD)
Net Weight:	262g(without battery)

Operations

- * On/off: single click to turn on, hold button over 2 seconds to turn off at any mode, or single click after a modes cycling
- * Mode switching: single click to switch high - med- low -strobe - SOS
- * Charging: red on while charging, green on after full charged
- * Power indicator: green on while power over 30%, red on while power lower than 30%



TF7

LED:	Cree XP-L2
Modes:	High/low/strobe
Max output:	700lm
Beam Intensity:	12843cd
Beam Distance:	226m
Battery:	1pc 18650 Li-ion battery
Running Time:	2.2 hours at high(3200mah 18650)
Rechargeable:	None
Material:	Aluminum
Surface finish:	Anodized
Color Option:	Black
Waterproof:	IP68
Dimension:	(L)135 x 33mm(Head OD)
Net weight:	120g(without battery)

Operations

- * On/off: complete click the tail switch
- * Momentary on: half click the switch
- * Mode switching: quick click within 1 second to switch high - low - strobe modes
- * Low power protection: the light flashes 3 times and can turn on low mode only



WF10

LED:	Cree XP-L2
Modes:	High/strobe
Max Output:	1000lm(16340 Li-ion)
Beam Intensity:	10386cd
Beam Distance:	193m
Battery:	2pcs (R)CR123 or 16340
Running Time:	55 minutes at high(700mah 16340)
Rechargeable:	None
Material:	Aluminum
Surface finish:	Anodized
Color Option:	Black
Waterproof:	IP67
Dimension:	(L)89 x (W)38 x (H)38mm
Net Weight:	107g(without battery)

Operations

- * On/off: click neither of the tail switch
- * Strobe on: quick double click within 0.5 second to switch to strobe mode
- * Low power protection: the light flashes 3 times while power lower than 10%



CL2



LED:	Cree XP-E2 + SMD
Modes:	High/low/strobe/red/red flashing/red & blue flashing
Max Output:	200lm
Battery:	Built-in 18650 Li-ion
Running Time:	5 hours at high
Rechargeable:	Yes, type-C
Charging input:	5V/1A
Material:	PC
Color Option:	Black, brown
Waterproof:	IP65
Dimension:	(L)180 x 40(OD)mm
Net Weight:	145g

Operations

- * Spot light On/off: single click the button A(with sector)
- * Mode switching: quick click to switch high - low - strobe modes
- * Flood light On/off: single click the button B(with rectangle)
- * Mode switching: quick click to switch high - low modes
- * Red light on: single click the button C(with circular)
- * Mode switching: quick click to switch red - red flashing - red & blue flashing
- * Charging: red on while charging, green on after full charged
- * Discharge: 5V/2A USB output works as a power bank

CL8

LED:	SMD
Modes:	high(100%) ~ low(1%) dimmable
Max output:	720lm
Battery:	Built-in 10000mah Li-ion
Running Time:	6 hours at high
Rechargeable:	Yes, USB-C
Charging input:	5V/2A
Material:	PC & ABS
Color Option:	Black, white, oliver
Waterproof:	IP65
Dimension:	(L)183 x (W)60 x (H)60mm
Net Weight:	163g

Operations

- * On/off: twist the button
- * Brightness dimming: twist the button to adjust the brightness from 100% to 1%
- * Charging: LED display shows the charging status



CL1

LED: SMD
 Modes: high/med/low
 Max output: 400lm
 Battery: Built-in 21700 Li-ion
 Running Time: 6 hours at high
 Rechargeable: Yes, type-C
 Charging input: 5V/2A
 Material: PC + ABS
 Color Option: Black
 Waterproof: IP65
 Dimension: (L)133 x 45mm(OD)
 Net weight: 130g

Operations

- * On/off: single click the button
- * Mode switching: quick click to switch cool white - natural white - warm white
- * Charging: blue on while charging



CL3

LED: SMD
 Modes: High-low dimmable
 Max Output: 250lm
 Battery: Built-in 18650 Li-ion
 Running Time: 4 hours at high
 Rechargeable: Yes, type-C
 Charging input: 5V/1A
 Material: PC + ABS
 Color Option: Black, olive, brown
 Waterproof: IP65
 Dimension: (L)128 x 49(OD)mm
 Net Weight: 107g

Operations

- * On/off: hold the button for seconds to turn on
- * Mode switching: quick click to switch complete lighting and back-up lighting
- * Brightness dimming: twist the switch to adjust the brightness from high to low
- * Charging: blue on while charging



CL10



LED:	SMD
Modes:	High-low dimmable and strobe
Max Output:	1000lm
Battery:	Built-in 3pcs 18650 Li-ion
Running Time:	5 hours at high
Rechargeable:	Yes, type-C
Charging input:	5V/2A
Material:	PC
Color Option:	Green, orange
Waterproof:	IP64
Dimension:	(L)180 x (W)90 x (H)90mm
Net Weight:	220g

Operations

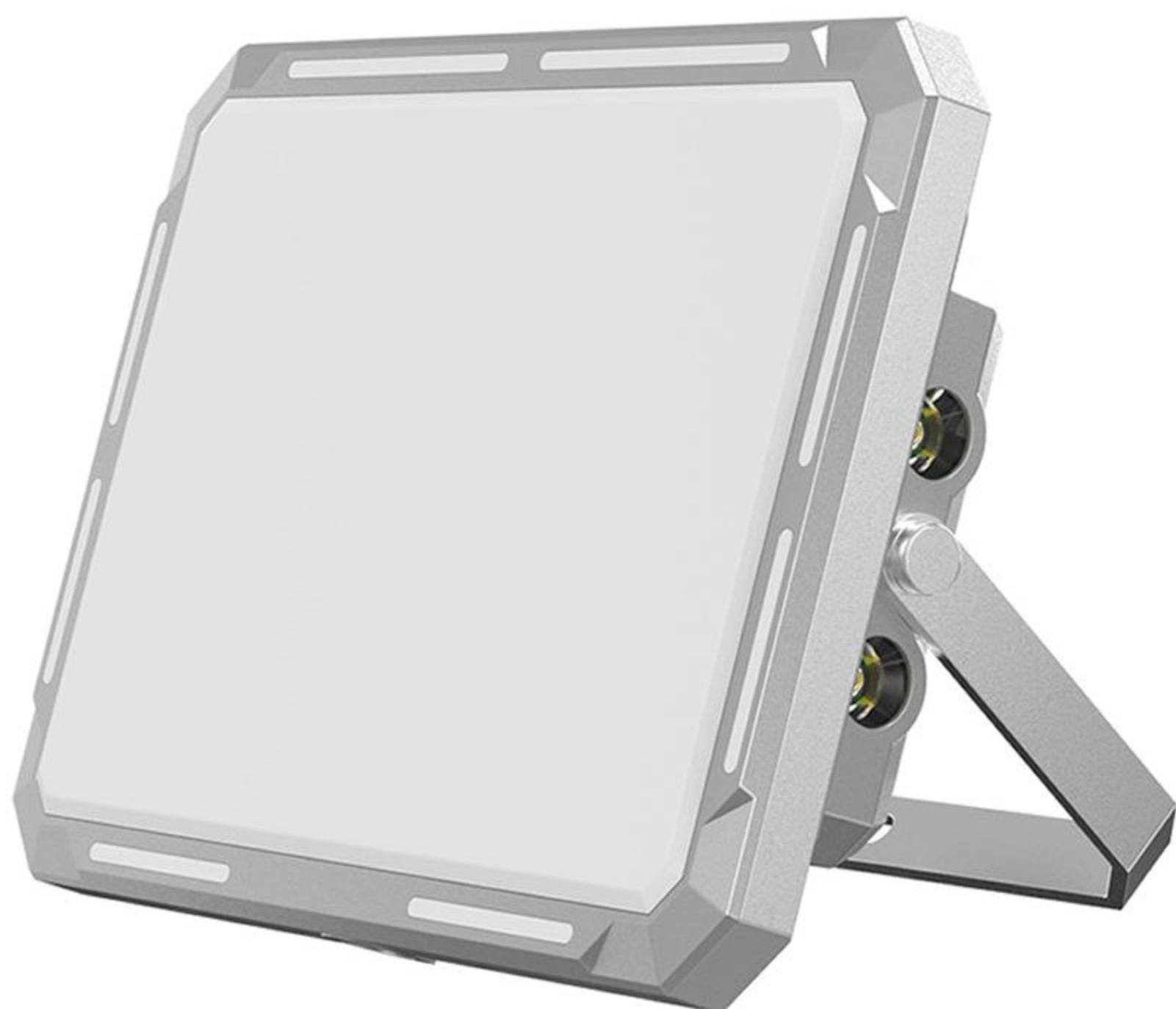
- * On/off: single click the button
- * Mode switching: quick click to switch cool white - natural white - warm white - strobe
- * Brightness dimming: hold the button for seconds the brightness switches from high to low
- * Charging: blue on while charging

CL12

LED:	SMD
Modes:	1% ~ 100% dimmable
Max output:	1200lm
Battery:	Built-in 5000mah Li-ion
Running Time:	4 hours at high
Rechargeable:	Yes, USB-C
Charging input:	5V/2A
Material:	Aluminum
Color Option:	Silver
Waterproof:	IP65
Dimension:	(L)136 x (W)96 x (H)33mm
Net Weight:	240g

Operations

- * Front light On/off: single click the button A
- * Mode switching: quick click to switch cool white - natural white - warm white
- * Brightness dimming: hold the button for seconds the brightness switches from high to low
- * Side light on off: single click the button B
- * Mode switching: quick click to switch white - red - white and red flashing
- * Spot light on: hold the button B for seconds at any side light mode, again for brightness dimming
- * Charging: LED display shows the charging status
- * Discharge: 5V/2A USB output works as a power bank



HL1

LED:	1pc Cree XP-E2 + 2pcs SMD 3030
Modes:	high/med/low/red/red SOS/red strobe
Max output:	120lm
Beam Distance:	67m
Battery:	Built-in Li-polymer
Running Time:	3 hours at high
Rechargeable:	Yes, type-C
Charging input:	5V/0.5A
Material:	PC
Surface finish:	None
Color Option:	Black
Waterproof:	IP65
Dimension:	(L)60 x (W)30 x (H)30mm
Net weight:	52g

Operations

- * On/off: click to turn on/off
- * Mode switching: quick click to switch high - med - low - red - red SOS modes
- * Strobe on: hold the switch over 2 seconds to turn on red strobe mode, single click to return to last lighting mode
- * Charging: red on while charging, green on after full charged



HL5

LED:	Luminus SST-20
Modes:	High/med/low/strobe/SOS
Max Output:	500lm
Beam Distance:	107m
Battery:	1pc 18650 Li-ion
Running Time:	3 hours at high
Rechargeable:	Yes, type-C
Charging input:	5V/2A
Material:	Aluminum
Surface finish:	Anodized
Color Option:	Black
Waterproof:	IP68
Dimension:	(L)88 x (W)32 x (H)24mm
Net Weight:	66g(without battery)

Operations

- * On/off: click to turn on/off
- * Mode switching: quick click to switch high - med - low - strobe - SOS modes
- * Charging: red on while charging, green on after full charged



HL3



LED:	Cree XP-G2 + 4pcs SMD 3030
Modes:	High/med/low/red/red strobe
Max Output:	300lm
Beam Distance:	98m
Battery:	Built-in 18650 Li-ion
Running Time:	4 hours at high
Rechargeable:	Yes, type-C
Charging input:	5V/1A
Material:	ABS
Color Option:	Black
Waterproof:	IP65
Dimension:	(L)85 x (W)45 x (H)45mm
Net Weight:	80g

Operations

- * On/off: click the left button to turn on/off the spot light, and click the right button to turn on/off the flood light and red light
- * Mode switching: quick click the left button to switch high - med - low modes; quick click the right button to switch white - red - red flashing modes
- * Charging: blue on while charging

HL4

LED:	2pcs Cree XP-E2 + 2pcs SMD 3030
Modes:	High/med/low/red/red strobe
Max output:	400lm
Beam Distance:	103m
Battery:	Built-in 18650 Li-ion
Running Time:	3.5 hours at high
Rechargeable:	Yes, type-C
Charging Input:	5V/1A
Material:	PC + ABS
Color Option:	Black
Waterproof:	IP65
Dimension:	(L)85 x (W)45 x (H)45mm
Net Weight:	80g

Operations

- * On/off: click the left button to turn on/off the spot light, and click the right button to turn on/off the red light
- * Mode switching: quick click the left button to switch high - med - low modes; quick click the right button to switch red - red flashing modes
- * Charging: blue on while charging



HL6

LED:	Luminus SST-20 + 4pcs SMD 3030
Modes:	high/med/low/strobe/red/red flashing
Max output:	600lm
Beam Distance:	117m
Battery:	1pc 18650
Running Time:	2.3 hours at high
Rechargeable:	Yes, type-C
Charging input:	5V/2A
Material:	Aluminum
Surface finish:	Anodized
Color Option:	Black
Waterproof:	IP67
Dimension:	(L)88 x (W)38 x (H)25mm
Net weight:	79g(without battery)

Operations

- * On/off: click to turn on/off
- * Mode switching: quick click to switch high - med - low - red - red flashing modes
- * Strobe on: quick double click to turn on strobe mode, single click to return last lighting mode
- * Charging: red on while charging, green on after full charged



HL8

LED:	2pcs Cree XP-G2 +2pcs SMD 3030
Modes:	high/med/low/strobe/red/red flashing
Max Output:	800lm
Beam Distance:	131m
Battery:	1pc 18650 Li-ion
Running Time:	2 hours at high
Rechargeable:	Yes, type-C
Charging input:	5V/2A
Material:	Aluminum
Surface finish:	Anodized
Color Option:	Black
Waterproof:	IP67
Dimension:	(L)88 x (W)38 x (H)25mm
Net Weight:	79g(without battery)

Operations

- * On/off: click to turn on/off
- * Mode switching: quick click to switch high - med - low - red - red flashing modes
- * Strobe on: quick double click to turn on strobe mode, single click to return last lighting mode
- * Charging: red on while charging, green on after full charged



BL6

LED:	Cree XM-L2
Modes:	High/med/low/strobe/SOS
Max Output:	600lm
Beam Distance:	103m
Battery:	1pc 18650 Li-ion
Running Time:	3 hours at high
Rechargeable:	Yes, micro USB
Charging input:	5V/1A
Material:	Aluminum and PC
Surface Finish:	Anodized
Color Option:	Red, blue, silver, gold, dark & light gray
Waterproof:	IP65
Dimension:	(L)105 x (W)35 x (H)35mm
Net Weight:	133g

Operations

- * On/off: hold the button over 2 seconds
- * Mode switching: quick click the button to switch high - med - low - strobe - SOS
- * Charging: red on while charging, green on after full charged



BL4

LED:	2pcs Cree XP-E2
Modes:	High/med/low/strobe/SOS
Max output:	400lm
Beam Distance:	92m
Battery:	Built-in Li-polymer
Running Time:	3 hours at high
Rechargeable:	Yes, USB-C
Charging Input:	5V/1A
Material:	Aluminum and ABS
Surface finish:	Anodized
Color Option:	Black
Waterproof:	IP65
Dimension:	(L)54 x (W)46 x (H)28mm
Net Weight:	75g

Operations

- * On/off: hold the button over 2 seconds
- * Mode switching: quick click the button to switch high - med - low - strobe - SOS
- * Charging: red on while charging, green on after full charged





Darkripper Outdoor Equipment Limited

Add: C401 De'ai Industrial Zone, Dalang South Rd., Longhua District,
Shenzhen 518109, China

Tel : (86) 133 0296 2705

Email: sales@darkripper.com